

OFFICIAL VISITOR GUIDE

PHILLIP ISLAND & BASS COAST

**PHILLIP
ISLAND**
NATURALLY PLAYFUL
visitphillipisland.com.au

**BASS
COAST**
attractive by nature
visitbasscoast.com.au

VICTORIA



**Visit our friendly team to help make
the most of your visit!**

Phillip Island Visitor Information Centre

895 Phillip Island Road, Newhaven

1300 366 422

Inverloch Visitor Information Centre

16 A'Beckett Street, Inverloch

1300 762 433

Open daily

- Maps and directions
- Accommodation bookings
- Tour and attraction ticket sales
- Local events and activities
- Gifts, souvenirs and local products
- Local, regional and state-wide brochures



visitbasscoast.com.au



attractive by nature



Photo by Photo Rangers

CONTENTS

One Amazing Place	4
Explore the villages	6
Food and wine	10
All about events	12
Get your art fix	15
Adventure time	16
Find family fun	17
Meet the locals	18
Top shots	19
Beaches	20
On the water	21
Culture and History	22
Great walks	24
Pedal power	25
Whale Discovery Trail	26
Accessible adventures	28
Staying safe while on the road	29
Shop local	30
Go to market	31
Phillip Island map	32
A region for all seasons	34
Bass Coast map	36
Things to do	40
Eat and drink	53
Places to stay	57

Acknowledgement to Country

We acknowledge the Traditional Custodians of the land on which you will visit, the Bunurong people. We pay our respects to their Elders past and present.

Wominjeka (welcome) and we ask that you respect this land during your visit. Bunurong people know Phillip Island as Millowl. This is Bunurong Country and part of Victoria's Kulin nation. All of our Country is highly significant, every square inch, every rock, every leaf, every dune and every artefact. The coastline of Millowl contains layers and layers of burnt shell (kitchen middens). Some of these layers have gaps of over 1,000 years between them, where our people eventually sat directly over the same place again, over 1,000 years later, to do the same thing: make fire, cook food, eat together and tell stories. The whole region is connected by thousands of generations worth of tradition, story and song.



One Amazing Place

Welcome to Phillip Island, home to 101 square kilometres of extraordinary experiences.

No matter what time of the year you visit, there's 101km² of island magic to be discovered. From watching fur seals sun themselves on Seal Rocks, to enjoying a smooth red at a cosy wine bar and taking to the skies on an exhilarating scenic helicopter ride, whichever direction you head there's fun to be found.

Whether you glamp under the stars, stay in a luxury cabin or book a caravan park with a view, we invite you to stay and create your own Island adventure.

Soon you'll see what us locals have long known
— there's nowhere quite like Phillip Island.



Explore the villages of



On Phillip Island you can easily discover quiet bays, experience legendary surf beaches, enjoy tranquil strolls along scenic coastal tracks and indulge in a leisurely beachside picnic — all in one day! Each seaside township has its own unique identity, so have fun getting to know them all.



Cowes

Cowes' buzzy seaside holiday vibe is complemented by a divine north-facing beach perfect for picnics, beach adventures, and water sports. Just 10 minutes from the Penguin Parade and Grand Prix Circuit, Cowes' huge variety of shops and accommodation options makes it the ideal base for your stay. In Cowes, you'll never go hungry. Savour gelato with ocean views, seafood at a waterfront restaurant, or a strong latte in a buzzing cafe — the choice is yours.



San Remo

Head to the seaside village of San Remo to watch fishermen unloading their catch before enjoying fish and chips at the San Remo Fisherman's Co-operative. If you prefer to catch your own fish, charters operate from the jetty. Head to the foreshore at noon to watch the pelicans gobble their share. San Remo is also home to an eclectic array of gift shops and plenty of places to dine whether you're after a classic pub meal, takeaway pizza or coffee to-go to accompany a beach stroll.

Phillip Island & Bass Coast



Rhyll

This fishing hamlet is where you'll find fishing spots, boat hire and charter departures. Head to the scenic esplanade for seaside restaurants, cafes and shops. Nature lovers will enjoy walking the Conservation Hill Nature Trail, through paperbark woodland, along a mangrove boardwalk to take in spectacular views across Rhyll Inlet to Observation Point. Keep an eye out for migratory and resident shorebirds, waterbirds and large waders, such as Bar-tailed Godwits.



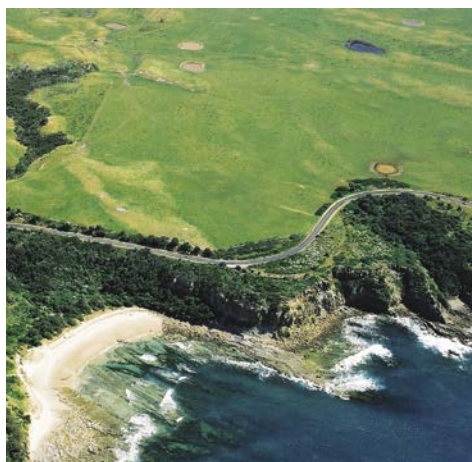
Newhaven and Churchill Island

Newhaven is home to the National Vietnam Veterans Museum, internationally recognised wetlands, and a yacht squadron marina with boat launching facilities. Stretch your legs in nature at the nearby Scenic Estate Conservation Reserve or enjoy a change of pace at Churchill Island where you can watch cow milking, whip cracking, and working dogs in action at a heritage farm.



Cape Woolamai

Golden sweeping beaches make this a perfect place for a beach walk all year round. Recognised as a National Surfing Reserve, the beach is patrolled in summer. The Cape is home to the largest colony of Short-tailed Shearwaters on the Island. Stop off at the entrance to Cape Woolamai to stock up on groceries, pick up a burger, pizza, coffee or pie, or treat yourself to a meal at one of Cape Woolamai's eateries.



The relaxed Bass Coast offers a range of down-to-earth outdoors experiences — swim, surf or walk the coastline, spotting whales along the way. You'll discover quaint country villages, picturesque farmland and heritage sites on the historic touring route.

Follow the cliffs of Anderson Peninsula near San Remo to Inverloch's beaches, or travel the Bunurong Coastal Drive to take in magnificent craggy rock faces.



Inverloch

Diving, kitesurfing, fishing, snorkelling, surfing and swimming are all on the agenda at Inverloch. Or take things slower with a gentle stroll along the beach. The Bunurong Environment Centre and Shell Museum is fun for all the family while the popular Jazz Festival offers live music fans a reason to visit. Surrounded by fertile farmland, the local farmers market is a must-do for foodies.



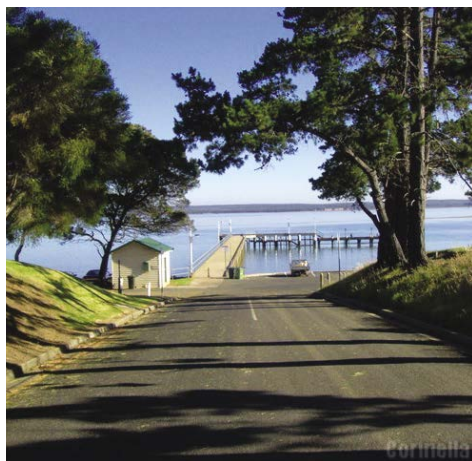
Wonthaggi and Cape Paterson

Home to the State Coal Mine that operated until 1968, Wonthaggi's mine heritage precinct offers a fascinating insight into the difficult working conditions local coal miners endured. Each day at midday, you'll hear a whistle sound in the town. This whistle was once located at the powerhouse and its shrill blast signalled shift changes across the coalfield. Nearby, the quiet beach town of Cape Paterson is home to pretty beaches and an ocean pool for a sheltered swimming experience.



Grantville and surrounds

Enjoy unique experiences in nature, world-class wines direct from the cellar door, quaint cafes and fun family parks and beaches. Visit The Gurdies Winery to taste locally made, cool climate wines or cast a line from Grantville Jetty at high tide. Discover Maru Koala and Animal Park and take a spectacular rural hinterland drive on the Grantville–Glen Alvie Road.



Bass, Corinella and Coronet Bay

Cosying up to the Bass River, the quaint town of Bass has a relaxed vibe all year round. At Coronet Bay discover the art trail, explore the walking tracks or go fishing for your supper. Nearby, the seaside village of Corinella has managed to keep itself off the beaten track, so you'll feel as though you have the views to yourself.



Kilcunda, Archies Creek and Dalyston

Linger over lunch with amazing views at the Kilcunda Ocean View Hotel. Take a refreshing dip after a morning walk or bike-ride on the Bass Coast Rail Trail. Travel through Archies Creek and visit the inimitable Hotel — be sure to check their gig guide for some great live music. Then stop into Dalyston General Store for fish and chips or visit the Old Dalyston church for a parma with a twist.

Food and wine

From devouring fish and chips on the beach, to enjoying a long, lazy brunch in a cosy café, to savouring a glass of crisp white wine at sun down, there's a smorgasbord of sublime culinary experiences to be had while visiting Phillip Island and the Bass Coast.

Here are eight experiences to get you started:

1. Sweet treats



If you've got a sweet tooth, then make a beeline for Newhaven's Phillip Island Chocolate Factory in Newhaven where you'll find truffles and hot

chocolate worth travelling for. Apart from selling seriously good coffee, The Waterboy Cafe in Cowes also stocks a supreme selection of freshly baked cakes



and muffins. In Inverloch, you'll find the funky dessert and coffee shop Gelato Al Mare with delicious ice cream. If visiting Wonthaggi, pop into the Coffee Collective for a range of sweet treats.

2. Destination dining



Enjoy waterside dining by booking a table at Saltwater on the Newhaven Jetty or Beach HQ in Cowes. In Inverloch, Radius Restaurant at the RACV Inverloch

Resort offers sweeping water views and a modern menu that champions produce from the region.

3. A spot of seafood



Partial to a seafood feast? Dine on local crayfish, Australian King Prawns or a portion of classic fish & chips at the San Remo Fisherman's

Co-op. In Inverloch, Tomo's Japanese serves up authentic sashimi and sushi dishes. Self-catering? Source fresh oysters from Bass Strait Direct in Newhaven.

4. Farm fresh fare



The Wild Food Farm and Café is a hidden gem showcasing native Australian flavours in their well-crafted menu. You can chose to sit in the old homestead or

in the lush rainforest area. Try the chocolate and wattle seed brownie or bircher muesli with lemon myrtle and pair with a local wine or a unique tea blend.

5. Good brews



Swimming and surfing can be hard work, so after a long day at the beach head to Cowes where there are not one, but two breweries serving ales and

meals to thirsty visitors. Ocean Reach Brewing and Rusty Water Brewery Restaurant & Bar are ready to welcome you with burgers and ice-cold ales at the end of a long day.

6. More cheese please



Located in Glen Forbes, Bassine Speciality Cheeses is where you'll find handmade artisan farmhouse cheeses.

While driving on the Bass Highway, stop in to support an impressive local producer creating high quality haloumi, brie, camembert and marinated feta.

7. Wine time



Bold reds, crisp whites and everything in between can be savoured throughout the region. Visit the Phillip Island Winery restaurant,

cellar door and event space in Ventnor, Purple Hen Winery for tastings or sit down for tapas, wood fired pizzas and wine tasting at Harman Wines. Visit wine merchant and bar Shearwaters and Bandicoots in Cowes to pick up a bottle of something special.

8. Family feeds



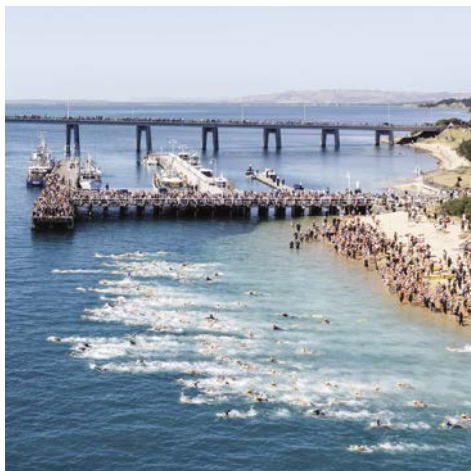
Family-friendly dining spots are aplenty in this pocket of Victoria.

Enjoy a classic pub menu with modern dishes at the family friendly Wooli

Tavern situated in Cape Woolamai.

In Cowes, the Lone Pine Bistro at the Phillip Island RSL has a packed kids menu and the North Pier Hotel has a whole kids entertainment floor!. Isola Di Capri's huge range of pizzas are popular with kids of all ages.

In San Remo, kids under 12 get a free jelly cup with their meal at the Westernport Hotel and there's even doggie biscuits and ice-cream for your four-legged family members.



All about events

Major events are part of our DNA! Home to two world-class motorcycle championships — the Australian Motorcycle Grand Prix (MotoGP) and Superbike World Championship — Phillip Island's Grand Prix Circuit provides a spectacular venue and backdrop for international and national motorsport events.

Music events include the annual Sounds of Summer and Ocean Sounds series, featuring talented local musical acts in beautiful relaxed settings.

People with a passion for open water swimming and running can get involved in the Bass Coast Series,

including one of the local favourites, the San Remo Channel Challenge.

The Island Whale Festival and Tidal Seafood Festival San Remo celebrate the region's natural environment and provide interactive experiences and fun activities for all ages.

There is lots on offer so check the [event calendars on our websites](#).





ISLAND WHALE FESTIVAL

PHILLIP ISLAND

30 June - 2 July

2023



islandwhales.com.au





SAN REMO VICTORIA

15-17 SEPTEMBER 2023
SAN REMO FORESHORE

- STRAIT TO PLATE SEAFOOD DINNER
- BLESSING OF THE FLEET
- DECKIE RACES
- FRESH SEAFOOD & LOCAL PRODUCE
- FILLETING & COOKING DEMOS
- KIDS ACTIVITIES

tidalseafoodfest.com.au

**Everyone
has a story**

**4-5
August
2023**



PHILLIP ISLAND

**Festival
of Stories**



Empowering a diverse group of people to tell their
tales in their favourite form.

Find out more: pifestivalofstories.com



Download the **Bass Coast Arts Around the Shire** brochure from visitphillipisland.com.au for a map and opening times.

Get your art fix

Artists and makers have long been inspired by the natural beauty of coastal regions, and Phillip Island and the Bass Coast is no exception.

From admiring striking public artworks, to buying original paintings straight from the artist, creative types have plenty to keep them busy in the region.

- Walk the Bronze Yarns Sculpture Trail at the Coronet Bay Foreshore Reserve.
- Take a workshop in painting, ceramics, drawing, photography or sculpture at the beautiful new co-working space at Clay & Co. in Cowes.
- Join award-winning ceramic and mosaic artist Heather Fahnne in Ventnor to create your own masterpiece.
- Stop in to Mingara Gallery in Cowes to view a range of Australian contemporary art.
- Discover glass works and sculpture at Artfusion Gallery in Anderson.
- Road trip through the countryside to visit the independent galleries and studios of the many talented artists living and working in the villages throughout the region.



Adventure time

Want to push yourself to the limit? Phillip Island and the Bass Coast represent a veritable playground for adrenaline-seeking adventurers. These six activities will help you to see the region from a fresh perspective.

Helicopter flights

If you're looking for a memorable way to cap off your stay, a trip with Phillip Island Helioppers to see Phillip Island and surrounds from above is an experience you won't forget.

Indoor climbing

The perfect activity for people of all ages, hitting the climbing wall at Clip 'n Climb is a great way to push yourself to new limits indoors.

Jet boating

Want to add some excitement to your day? Take to the sea aboard a fast and furious jet boat with Ocean Adventures to fly along the waters off Cape Woolamai.

Go karts

Go karting on a replica of the Phillip Island Grand Prix Circuit is a fun way for the whole family to get their thrills. The ocean views from the track are incredible too!

Kitesurfing

Whether you're an experienced kite surfer or beginner in need of a few lessons, head to Inverloch — considered to be one of Australia's best kitesurfing spots — to catch some air above the waves.

High ropes

Challenge yourself on the 10-metre high SkyTrail ropes course with 30 varying obstacles.





Find family fun

From spotting native wildlife to exploring rock pools at the beach, Phillip Island and the Bass Coast region is packed with activities perfect for kids of all ages.

Beach days

Have fun swimming Smiths Beach, which is patrolled during summer. Take your trip to the next level by learning to surf with one of the surf schools operating there. Enjoy the calmer conditions at Cowes Main Beach — the perfect spot for an afternoon dip. At low tide, explore the marine life in and around the rock pools at Cape Paterson Beach and Kitty Miller Bay.

Waterplay

Learn something new by booking stand-up paddle board lessons for your whole family, or explore Phillip Island's amazing coastline on a guided sea kayaking tour with Pioneer Kayaking. Hire a boat and head out for a day of fishing, or try a guided sea scooter tour to explore under the waves.

Animal encounters

Be thrilled by encounters with native wildlife that inhabit the region including koalas, penguins, echidnas, bandicoots and wallabies. Join a Wildlife Coast Cruise to see the local Australian fur seal colony basking on rocks, visit Maru Koala and Animal Park in Grantville to see a wide range of native animals and end your day with the Penguin Parade.

Get back to nature

Switch off your phones and devices to wander through native bushland, hike the rugged coastline or hire some bikes for a family ride along a bush trail.

Just for fun

Keep your clan entertained at a challenging maze or Magic Manor at Amaze 'N Things, bowling or laser tag at Phillip Island Ten Pin or visit a mini golf course. Go karting and paintball are always a winner with competitive kids. Learn what lives in the deep at the immersive Antarctic Journey at the Nobbies Centre.



Meet the locals

Phillip Island and the Bass Coast are home to many unique native species. Away from the traffic and noise of the city, this region is a great place to encounter wildlife you may not have seen in the flesh before. Have fun ticking off some (or all) of these local wildlife experiences during your visit.

Little Penguins

Watch in wonder as hundreds of Little Penguins waddle from the sea at dusk, then clamber to their nests in the dunes at the Penguin Parade.

Koalas

Take a walk through the woodlands at the Koala Conservation Reserve to spot koalas dozing in the eucalypts, oblivious to noisy birdlife.

Whales

From May to October, follow the Whale Discovery Trail to have fun



spotting migrating Humpback and Southern Right whales off the southern coast's unofficial whale superhighway. Head out on a coastal hike and keep your eyes on the ocean to catch a glimpse of a whale tail emerging from the water or book a whale watching cruise to get a little closer to the action.

Short-tailed Shearwaters

Cape Woolamai is where you'll find Phillip Island's largest colony of Short-tailed Shearwaters. Each year this remarkable species flies all the way from Alaska to this corner of Australia to breed, arriving in September and departing in April.

Australian Fur Seals

Feel the saltwater spray on your face as you cruise to Seal Rocks, where thousands of fur seals splash and play in the waves.

Pelicans

Marvel at the majestic pelicans as they swoop to scoop a fish from the sea or visit the foreshore next to San Remo at midday to watch them lining up for a feed.



Top shots

Looking for the perfect shot to remember your trip by? Whether you're a professional photographer or hoping to wow your Instagram followers, these photogenic spots deliver beauty and wonder in spades.

The Pinnacles, Phillip Island

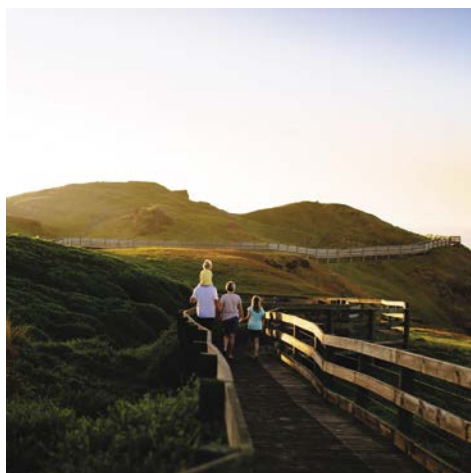
South of Cape Woolamai, The Pinnacles are one of Phillip Island's most beautiful spots. Pack a picnic and enjoy watching the waves crash into the striking rock formations that emerge from the sea in spectacular style.

Pyramid Rock, Phillip Island

Whether you drive and park at the lookout or hike in from Berrys Beach, the triangular Pyramid Rock is a must-see spot for photographers.

The Nobbies, Phillip Island

Walk the boardwalk along The Nobbies and you'll find plenty of amazing sights to capture. Time your shot right and you might get the ultimate dramatic shot of waves lashing the Blow Hole.



Bourke Creek Trestle Bridge, Kilcunda

Located on the Bass Coast Rail Trail, this spectacular, heritage-listed wooden bridge is more than 100 years old. Get there just before sunset to capture the bridge in its best light.

Forrest Caves, Phillip Island

The dramatic lines and curves of Forrest Caves make it a popular spot with Instagrammers at low tide.

Eagles Nest, Inverloch

This dramatic rock formation off the Inverloch coast looks incredible when photographed from the beach or from the coastline above.

Cape Paterson Bay Beach Pool

A golden sunrise at this ocean pool carved out of the rock platform makes for a perfect shot.

Mouth of Powlett River

The wide, slow moving river and sand dunes makes this spot a photographer's dream.



Beaches

Phillip Island and Bass Coast beaches and coastlines are one of the major drawcards to the region. From world-class surf beaches to beautiful bay beaches, you will find water activities galore during summer. Watch local surfers ride along waves at Cape Woolamai or Inverloch, learn to ride your first wave at Smiths Beach, explore the rock pools of Cape Paterson or let the little ones paddle around in the calmness of the bay at Cowes Main Beach.

While the Phillip Island and Bass Coast beaches may look inviting to swim, they can be hazardous all year round. During the summer months, some beaches in the area are patrolled by lifesavers, including Inverloch,

Cape Paterson, Smiths Beach and Cowes. Always remember to swim between the flags and download the Beach Safe app to check conditions before entering the water.



On the water

Swimming, surfing, kneeboarding, kitesurfing, fishing and stand-up paddleboarding — Phillip Island and the Bass Coast is a playground for watersports fans.

Gone fishing

Fishing is a local industry around Phillip Island, with the fleet based at San Remo. For the rod and line fishers, toss a line in from the jetties at Grantville, Cowes, Newhaven, Rhyll, San Remo, Inverloch and Corinella. Charter fishing expeditions depart from Rhyll, Inverloch and San Remo, and boats can be hired at Rhyll, Inverloch and Corinella.

Squid, flathead, snapper, whiting, Australian salmon, flounder, elephant fish, school and gummy shark, garfish, trevally and pike can all be caught in the area. Boat ramps are located at Rhyll, Anderson Road in Cowes West, Newhaven, Corinella, Grantville and Inverloch. Stop by Jim's Bait & Tackle in San Remo to stock up on fishing supplies and local tips. You'll need a license to fish in Western Port, so get

Access the latest information
about local beach conditions
by downloading the
Beachsafe App:

beachsafe.org.au/apps

Learn more about the
Phillip Island National
Surfing Reserve here:
**[surfingreserves.org/
phillip-island.php](https://surfingreserves.org/phillip-island.php)**



one at a fishing outlet or online before casting off. Regulations on maximum and minimum sizes of fish also apply.

Surf's up

Phillip Island National Surfing Reserve includes the breaks at Cape Woolamai, Smiths, Summerland and Cat Bay. Book some surf lessons with a local operator if you're new to the sport or want to brush up on your skills.

Surf safety

Surf beaches on the south coast can be very dangerous. Swim between the flags at beaches that are patrolled seasonally and talk to the lifesavers about where to swim.

Surf Life Saving Clubs

Woolamai Beach Surf Life Saving Club
03 5956 7311

Inverloch Surf Life Saving Club
03 5674 1744

Cape Paterson Surf Life Saving Club
www.capepatersonslsc.org

Wonthaggi Life Saving Club
03 5674 4720



Culture and History

From an old coal mine, to learning about the old ways on an historic farm, there are plenty of ways to unearth the rich past of the region.

- The traditional custodians of the land and water, the Bunurong People have been visiting the region for thousands of years. You'll find interesting sites all along the Bass Coast including middens — piles of shells and bones. The Yalluk Bulluk clan came to Millowl/Phillip Island in the summer months to feast on shellfish, fish, small marsupials and mutton birds (short tailed shearwaters).
- At the Bunurong Environment Centre and Shell Museum in Inverloch, learn about the Dinosaur Dreaming project, which explores a layer of fossils of long-extinct animals near Inverloch.
- Head to Churchill Island for hands-on farming demonstrations at the heritage farm where Victoria's first European agricultural pursuits took place.
- Honour the sacrifices of Australians who served at the National Vietnam Veterans Museum in Newhaven.
- Explore the State Coal Mine Heritage Area in Wonthaggi.



UNESCO Biosphere Reserve

Did you know Phillip Island is recognised by UNESCO? It's within the Mornington Peninsula and Western Port Biosphere Reserve which is part of a global UNESCO network, connected to 738 Biosphere Reserves across 134 countries.

UNESCO Biosphere Reserve status recognises places around the world with outstanding natural environments, where communities are committed to working together to live sustainably.

Biosphere reserves are living, learning places. They are used to showcase innovative approaches to conservation and sustainable development and act as a regional centre for scientific research and education on natural and managed ecosystems.

To learn more, or connect with us and our work within the Biosphere Reserve, find us at www.biosphere.org.au or through our social media channels.



WESTERN PORT — AN INTERNATIONALLY SIGNIFICANT WETLAND



Western Port is a natural wonder on the edge of Australia's second-largest city. Western Port's outstanding biodiversity is founded on a mosaic of marine, intertidal, coastal, wetland and island environments.

Western Port is part of the UNESCO Biosphere Reserve and is also a Ramsar site — a wetland of international importance. The Ramsar Convention aims to halt and reverse the worldwide loss of wetlands and to conserve those that remain.

Western Port's shores are fringed by some of the world's most southerly mangrove forests, vast intertidal mudflats, Victoria's largest saltmarshes and sandy beaches.



Photo Credit: Mark Lethlean

Beneath the water, seagrass meadows grow across Western Port's northern and western arms around French Island. They provide critical habitat and energy for fish and the invertebrates they live on.

Birdwatchers and scientists have counted 115 species of waterbirds, waders and seabirds. They account for 65% of Victoria's bird species diversity and over 30 migratory waterbird species listed under international conservation agreements.

Follow us on our socials



@westernportbiosphere



@westernport_biosphere



Mornington Peninsula and
Western Port Biosphere Foundation

Great walks

With coastal walking tracks occupying vast stretches of the Bass Coast and more than a quarter of Phillip Island conserved for the environment, nature lovers are spoiled for choice when it comes to walking trails.

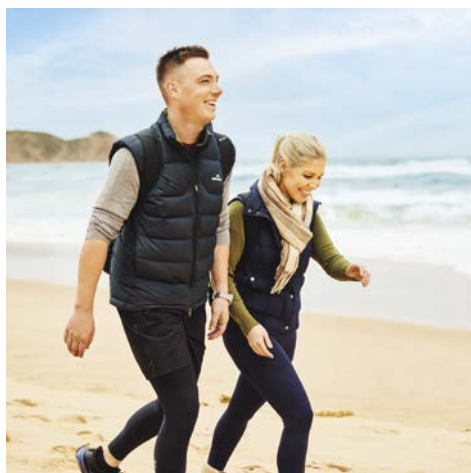
Add these five key trails to your must-walk list:

1. George Bass Coastal Walk

Breathe in the fresh, salty air on this walk that follows the footsteps of explorer George Bass. Leaving from San Remo, the clifftop path offers incredible views of Bass Strait. At 7km one-way, be sure to bring a packed lunch and drinks.

2. Rhyll Inlet

Recognised for its tremendous biological diversity, a peaceful walk around the pram-friendly mangrove boardwalks of Rhyll Inlet will reveal unique bird species. As an important wetland habitat for migratory wading birds, this quiet spot is the ideal place for a gentle walk and picnic lunch.



3. Inverloch Foreshore Walk

A shared pathway with views of Anderson Inlet and Point Smythe, this 90 minute walk includes access to exercise stations, playgrounds and picnic areas.

4. Cape Woolamai Walk

This blockbuster walk is a must-do for fit, active hikers not afraid to raise a sweat. The spectacular views on this circuit to the Pinnacles provide great views during whale season and more.

5. Kitty Miller Bay Walk

This beautiful coastal walk rewards you with spectacular views and – during low tide - the chance to see what remains of the SS Speke Shipwreck.

Collect your
Walks and Trails Brochure
at any local
Visitor Information Centre

Pedal power

Feel like an active adventure?

Saddle up and see the sights of Phillip Island and the Bass Coast from a bike.

Whether you bring your own bikes or hire some locally, there are trails to suit all riding abilities.

Try these five rides on your next visit:

1. Bass Coast Rail Trail

Sure, you could walk this popular trail linking the old Wonthaggi Railway Station to Woolamai Racecourse but biking it is even more fun. Make your way along the relatively flat, fine gravel-surfaced trail while taking in views of the coast, farms and surrounding bushland, as well as learning about local heritage at the historical sites along the way.

2. Oswin Roberts Reserve, Rhyll

Look out for resident koalas and wallabies while riding the three track loops in this peaceful nature reserve located in Rhyll.



3. Inverloch Foreshore Shared Pathway

The ideal spot for a casual cycle with your kids, this flat, 5km pathway along the Inverloch Foreshore offers pretty beach views and plenty of places to stop for a picnic, play or rest.

4. Churchill Island Trail

At just over 4km, this looped trail around the island is perfect for a leisurely ride through farmland and forests. Take in scenic views across Western Port Bay, stop to admire local birdlife and bask in the serenity of this special place.

5. Cowes Esplanade

Cruise the beachfront of Cowes stopping for a swim, gelato or fish and chips on the beach.

Bass Coast Whale Discovery Trail

Follow the Whale Discovery Trail and stop at iconic bays, headlands and beaches to enjoy magnificent views as you search for whales. The Trail leads you to a range of coastal viewing points where interpretive signage provides an insight into the majesty and mystery of whales and their behaviours.

Grossard Point

This point, in Ventnor, became the site of the lonely grave of Captain Grossard in 1868 after a tragic accident. Watch for whales entering the bay close to shore.

Summerland

Home to great surf and the world's largest colony of little penguins that return home to their burrows at sunset. Managed by Phillip Island Nature Parks, this is also an important breeding, feeding and roosting site for short-tailed shearwaters and hooded plovers.



Short-tailed shearwaters

Pyramid Rock

From these high rocky cliffs you may see passing whales and dolphins. Pyramid Rock is a basalt outcrop shaped by waves over thousands of years. Managed by Phillip Island Nature Parks, this is an important breeding, feeding and roosting site for short-tailed shearwaters, black-faced cormorants and sooty oystercatchers.



Sooty oystercatcher

Western Port

Humpbacks have been spotted from this jetty, so keep a watch out! Also look for bottlenose dolphins which can be seen in the bay all year round.

Blow patterns

Humpback

Southern Right

Killer Whale

See us from May to August

Have you
To report

Breaching

The whale jumps out of the water. It may be to communicate or perhaps to get rid of parasites.



Punchbowl

Follow the George Bass Coastal Walk for spectacular coastal views. Watch for whales from the high cliffs overlooking the wild waters and pounding surf of Bass Strait.



Humpback feeding and krill

Cape Paterson First Surf

Bunurong Marine Park protects broad rock platforms and underwater reefs that are home to over 300 species of animals and plants. This is a great spot for watching for whales. It's also perfect for putting on your snorkel and exploring the vast array of marine life below the surface.

Cape Woolamai

Home to Phillip Island's largest colony of short-tailed shearwaters that fly here from waters around Alaska each year to breed. Look for albatross and sea eagles soaring above.



Whistling kite

Harpers Haven

In 1826 Captain William Hovell of Corinella discovered coal here and in 1901 the *Artisan* ran aground at nearby Wreck Beach. Today this is a haven for wildlife including whales and the threatened beach-nesting hooded plover. Please follow the signage designed to protect them during their summer breeding season.

Hooded plover



Kilcunda

Watch the waves for whales, dolphins and seabirds. To the east lies the environmentally and culturally significant Powlett River estuary, a sanctuary for birdlife including the threatened orange-bellied parrot.

Eagles Nest

The site of the discovery of Australia's first dinosaur bone, the Cape Paterson Claw. The find was made in 1903 at a nearby site in the sedimentary rocks below that are over 115 million years old.

You been lucky enough to spot some whales today? What are they doing?
 t sightings and see all the latest recordings - visit our 'Whale Trail' page at visitbasscoast.com.au

g
 mps clear
 ater. This
 communicate
 o dislodge

Spy hopping

The whale raises its head clear of the water to take a look at its surroundings. You will often see the upper and lower jaws as it performs this move.

Tail slapping

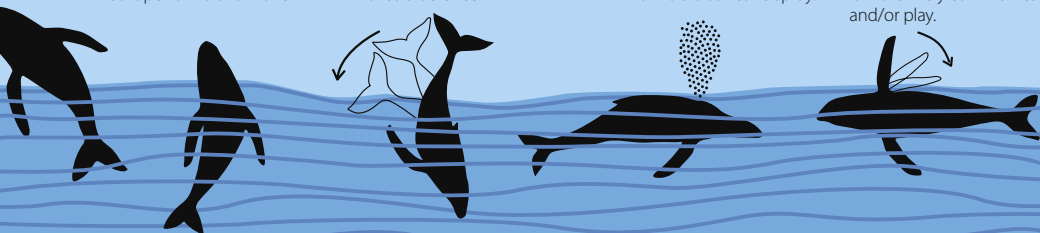
The whale lifts its tail clear of the water and slaps it on the surface. This may be to communicate with other whales, scare prey, or as a defence.

Blow

Whales expel warm air through their blowhole with such force that it condenses in cool air and forms a distinctive spray.

Pec slapping

The whale raises one or both pectoral fins out of the water and slaps them on the surface. It may look like waving, but is more likely communication and/or play.





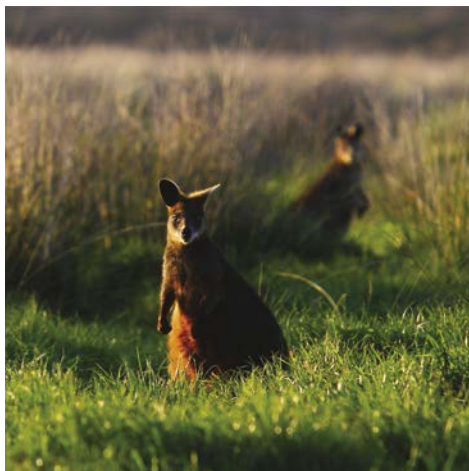
Accessible adventures

Tap into a range of easy-access guides and equipment to make your stay an exceptional one. From coasting along wheelchair-friendly boardwalks, to staying in an accessible holiday home, or borrowing an all-terrain wheelchair at the beach, Phillip Island and Bass Coast have a range of accommodation and activity options for people with accessibility requirements.

For more information:

- Visit the **Phillip Island** or **Inverloch Visitor Centre** or call **1300 226 278** for information on accessible attractions, accommodation and activities.
- Pick up a Walks and Trails brochure with information including trail surface, length and estimated time to complete walk.
- Look out for designated accessible parking and toilets symbols on walks.
- visitbasscoast.com.au/plan-your-trip/accessible-bass-coast for information on:
 - Easy access accommodation, attractions, restaurants and cafes
 - Mobility maps for the townships of Cowes, Inverloch and Wonthaggi
 - Changing Places locations in Wonthaggi, Cowes and Summerland
 - Free all-terrain wheelchair hire





Staying safe while on the road

When visiting our region you'll often see local wildlife on the roads and roadside. Help protect native wildlife (and yourself) by driving carefully.

Slow down

Reduce your speed to prevent collisions with wildlife.

Stay alert

Wildlife can be more active near roadsides and harder to see at sunrise and sunset.

Expect the unexpected

Wildlife can be unpredictable. It's hard to know what they'll do next, so keep this in mind while travelling in the region.

Brake safely

Always apply your brakes in a controlled manner.

Avoid swerving suddenly

Never swerve if you see wildlife on the road and avoid swerving violently to avoid the animal as this can cause you to lose control of your vehicle.

Report injured wildlife

If you encounter an injured animal call Wildlife Victoria on **03 8400 7300**



Shop local

Want to support local farmers and producers? Before you head home, stock up on gourmet treats, farm fresh produce and more by visiting some of the region's farm gates and speciality food stores.

Morning

Start your journey in Ventnor by visiting The Store Phillip Island, a lovely spot where you'll find just-baked sourdough loaves, local wines, fresh flowers, plants and more. Next, head to Cowes for a visit to the Phillip Island Strawberries farmgate. Here you can buy homemade jams, relishes and — of course — fresh strawberries grown onsite via a clever vertical growing system.

Lunchtime

Visit the Ocean Reach Brewing Taphouse in Cowes for juicy, American-style burgers and fries. Don't forget to grab a sneaky six pack (or two) of IPA to enjoy at home. Before crossing over the bridge to San Remo, a visit to Ivy Plant Studio at Newhaven is a must for plant enthusiasts.



Then browse a range of boutique gifts and homewares at Latitude Trading in San Remo.

Afternoon

Head off the island towards Cape Paterson where you'll find Goshen Country, a family-run farmgate selling organic fruit and vegetables straight from the paddock. Produce doesn't get any fresher than this!

Head back north and stop at the Kilcunda General Store for an afternoon coffee and to grab some housemade condiments to add to your haul. Then, keep driving north until you hit Bassine Speciality Cheeses. From tangy, marinated feta to creamy camembert, the artisan cheese range here will delight fromage fans.

Your final stop is at Caldermeade Farm. Nestled behind centuries old hawthorn hedges you'll find this modern, fully operational commercial dairy farm. Take a farm tour, watch live milking or take home some of the delicious products made on site. You'll also find a farm house cafe serving award winning pies and Devonshire Teas.

Go to market

Churchill Island Farmers' Market

Samuel Amess Drive

8am – 1pm.

First Saturday each month

Cowes Island Craft Market

St Phillips Parish Hall, Thompson Avenue

9am – 2pm.

Second Saturday each month

Cowes Market on Chapel

Chapel Street, Cowes

8am – 2pm.

Fourth Saturday each month

(second Saturday in December)

Grantville Market

Grantville Recreation Reserve

8am – 2pm.

Fourth Sunday each month

(third Sunday in December)

Inverloch Community Farmers' Market

The Glade

8am – 1pm.

Last Sunday each month

Inverloch Farmers' Market

The Glade

8am – 1pm.

Third Sunday each month

Kongwak Market

Korumburra Road

10am – 3pm.

Every Sunday (closed 22nd December)

Newhaven Market

22 School Avenue, Newhaven

8am – 1pm.

Third Saturday each month

Wonthaggi Rotary Market

Murray Street

8am – 1pm.

Second Sunday each month

For other markets see the Markets page on visitbasscoast.com.au



PHILLIP ISLAND AND SAN REMO

Daily departures to
Seal Rocks, passenger ferry service
to French Island and Stony Point.

WESTERNPORTFERRIES

WildlifeCOAST
CRUISES



Visitor Information Centre



Wildlife, Coastal & Public Reserves



Public Toilets



Walking Tracks



Surf Beaches



Boat Ramps



Public BBQ



Places to Eat



Wineries

Phillip Island Facts and Figures

People - 14,000 permanent residents

Penguins - 40,000

Birds - 348 species Koalas - 50

Seal Rocks - 18,000 seals call this home
6,000 pups born each year

Area - 101 square kilometres



A region for every season

Near enough to reach on a short drive from Melbourne but far enough to feel like you've had a real escape, Phillip Island is Victoria's holiday sweet spot.

No matter what time of the year you visit, there's 101km² of island magic to be discovered. From watching fur seals sun themselves on Seal Rocks, to enjoying a smooth red at a cosy wine bar and taking to the skies on an exhilarating scenic helicopter ride, whichever direction you head there's fun to be found.

Summer Highlights

- Enjoy the coastal summer vibe of holidays with friends and family
- Beach days exploring one of Phillip Island and the Bass Coast's stunning beaches
- Penguins are breeding, meaning you may spot some chicks and higher penguin numbers
- Dinner and drinks overlooking the water at one of the many restaurants
- Ideal conditions for taking a boat cruise
- Australian Fur Seal pups start learning to swim
- The season for water sports including learning to surf, kayaking and snorkelling
- World Superbikes return to Phillip Island

- Bass Coast Summer Series including San Remo Channel Challenge, Cowes Classic and Cape Aquathon

Autumn Highlights

- Explore one of Phillip Island's and Bass Coast's coastal walks
- Hire a bike or bring your own and discover the region on two wheels
- Grab a picnic basket and embark on a foodie adventure
- With many clear nights, there is no better time to go stargazing!
- Discover the history of dinosaurs in the region at the Dinosaur Dreaming dig site
- Autumn sunsets are not to be missed! Head to one of the Southern facing beaches



- March long weekend, Easter Holidays and Anzac Day
- Make the most of the lingering warmer weather and learn how to surf, go kayaking or take a boat cruise

Winter Highlights

- Whale Watching! Go on a whale cruise or follow the Phillip Island and Bass Coast Whale Discovery Trail, as Humpback and Southern Right whales can be spotted from late May until the end of August along the coastline.
- Celebrate the arrival of the whales to our coastal waters at the annual Island Whale Festival
- Enjoy some smooth jazz at the Inverloch Jazz Festival or hear from a diverse group of people telling their tales at the Festival of Stories
- June Long Weekend and Winter School holidays
- Tick off a range of indoor attractions as the weather cools down
- Find a cosy spot to sip on a glass of wine or enjoy a local beer at one of the region's wineries, breweries, pubs or taverns
- Book a winter getaway to relax and unwind



- Find your thickest puffer jacket and explore some of the region's best bush and coastal walks

Spring Highlights

- Picnic time! As the weather starts to warm back up, there's no better time to collect local produce and picnic in the region
- A great season to dust off the hiking gear and explore one of Phillip Island and the Bass Coast's coastal or bush walks
- Watch world-class action and thrill at the speed at the Australian Motorcycle Grand Prix
- Discover all things seafood and fishing at the Tidal Seafood Festival San Remo
- September School Holidays and Melbourne Cup Weekend
- Marvel at Phillip Island's lush landscapes from above on a helicopter flight
- Short-tailed Shearwaters return to Phillip Island after migrating from Alaska
- Explore coastal and hinterland villages and discover buzzing cafes, cute shops and more







BASS COAST & SURROUNDS



LEGEND










Road Classification

-  Freeway/Highway
-  Major Sealed Road
-  Minor Sealed Road
-  Major Unsealed Road



Park, Reserve & Other Public Land

- Park & Reserve
- Marine National Park & Marine Sanctuary
- Marine Park and Reserve
- Other Public Land

Miscellaneous

-  Bass Coast Shire
-  Railway Line
-  Bass Coast Rail Trail
-  Ferry Service
-  Distance between towns
-  Visitor Information Centre
-  Licensed Airport
-  National Route Number
-  State Route Number

Touring Routes

-  Sydney - Melbourne Coastal Drive
-  Bunurong Coastal Drive
-  Wineries Tour
-  Penguins to The Prom Drive



Cartography by Spatial Vision 2007



DISTANCE (KM) ↓	TIME(leisurely driving) →								
		COWES	SAN REMO	GRANTVILLE	WONTHAGGI	INVERLOCH	WILSONS PROM.	MELBOURNE	MORNINGTON PENINSULA
	COWES		0:25	0:45	0:50	1:00	2:25	2:00	
	SAN REMO	16		0:20	0:25	0:40	2:00	1:40	
	GRANTVILLE	40	23		0:30	0:40	2:05	1:20	
	WONTHAGGI	41	23	34		0:15	1:40	1:50	
	INVERLOCH	53	37	46	13		2:05	2:00	
	WILSONS PROMONTORY	137	120	129	97	84		3:10	
	MELBOURNE	142	125	103	136	146	213		
	MORNINGTON PENINSULA	123	126	84	117	128	197	81	
FRENCH ISLAND	FERRY RIDE FROM COWES TAKES 20 MINS.								



VISITOR INFORMATION CENTRES

Phillip Island Visitor Information Centre
Phone 1300 366 422

Inverloch Visitor Information Centre
Phone 1300 762 433

visitphillipisland.com.au
visitbasscoast.com.au

NINGTON ISLAND

1:50

1:30

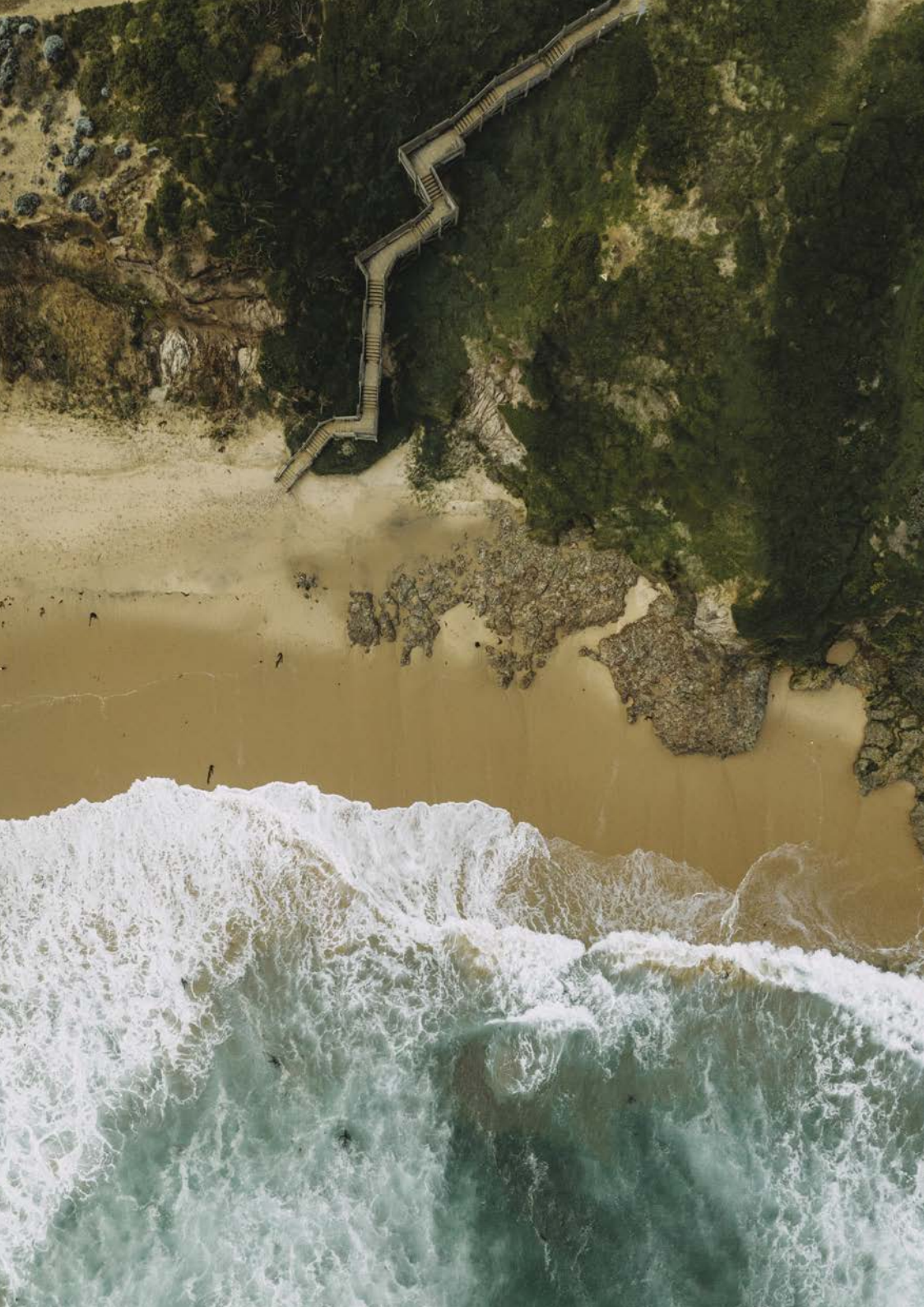
1:10

1:35

1:45

3:00

1:15



NO stamp duty **NO** council rates **NO** hidden costs

Live the island seaside vibe at

Lifestyle Phillip Island

Whether you're a Phillip Island local looking to downsize to your slice of paradise, or a seachanger seeking an uninterrupted island staycation, Lifestyle Phillip Island is the ultimate coastal community.

Featuring modern, low-maintenance, first-of-their-kind homes and best-in-class amenities, this coastal community presents boundless opportunities to live your life your way, surrounded by the many natural delights of Phillip Island.

Beyond your slice of paradise, you'll enjoy unrivalled proximity to the beach, local shops and cafes, parks and wildlife reserves, walking trails and lookout points, wineries, golf ranges and a whole suite of attractions for which Phillip Island is celebrated.

Most importantly, you'll be free to do it all in your own island time.

Q [lifestyle communities phillip island](#)

60 Thompson Avenue, Cowes | 1300 50 55 60

Lifestyle
PHILLIP ISLAND

Open Spaces Open Minds

Newhaven College's vision is to inspire young people with knowledge, empathy and curiosity to engage in their world with confidence and a sense of purpose. Whether your child is one of our youngest Preps or one of our Year 12s preparing for life beyond school, we nurture the needs of each child to ensure their various gifts and talents can flourish.

Come and find out more about our College.
Call our Registrar Belinda Manning on **03 5956 7505**
or email belinda.manning@newhavencol.vic.edu.au



**NEWHAVEN
COLLEGE**

IN QUIETNESS AND CONFIDENCE SHALL BE YOUR STRENGTH



newhavencol.vic.edu.au



BRINNIE T HOME

Brinnie T Home is a hidden gem located in the heart of Cowes. Whether you are shopping for gifts or for beautiful souvenirs to remember your stay, we can help you make the perfect selection.

Showcasing Local, Melbourne
& International brands.

**6/34 Thompson Ave
Cowes**

T: 5952 6110

W: brinniethome.com.au



LINENHOUSE

- On-trend bed linen at affordable prices — Up to 70% off RRP.
- Highly informed and super-friendly staff.
- We help inspire you to make your house a home.
- Huge savings across a wide range of home products: bed essentials, quilt covers, sheets, cushions, bathroom towels and more.

**Shop 3,
154-156 Thompson Ave Cowes**
T: 03 9558 0159
@linenhouse_outlets



**LINENHOUSE
OUTLET**



**AMAZE'N
THINGS**

**BOOK
ONLINE**

fun, magic &
ADVENTURE!

MINI GOLF • ROPES • ILLUSIONS • PARTIES!



@AMAZETHINGS
#amazethings

1805 PHILLIP ISLAND RD COWES VIC (03) 5952 2283
please visit **AMAZETHINGS.COM.AU**

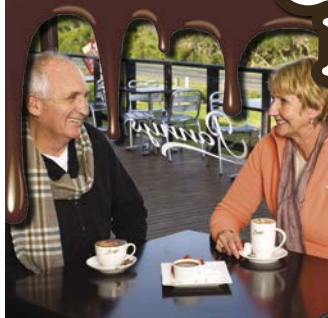
**Over
190
varieties
of handmade
chocolate!**

Pannys

**FREE
SAMPLE
FOR EVERY
VISITOR**

**OPEN:
7 days a week
10am to 5pm**

Phillip Island Chocolate Factory



**400kg
of Chocolate
every
3 minutes**



RELAX IN OUR CAFE • EXPLORE OUR UNIQUE SWEET EXHIBITION • BROWSE OUR FACTORY DIRECT SHOP



An Amazing, entertaining,
interactive and
educational chocolate
exhibition where you can
see chocolate used and
presented like nowhere
else in the world.
This is without doubt the
sweetest attraction
on Phillip Island.

930 Phillip Island Rd
Newhaven, 3925
Ph: 03 5956 6600

www.pannys.com.au





EXPERIENCE INCREDIBLE

Wildlife & Scenery

at Phillip Island & Wilsons Prom



SEAL CRUISE | CAPE CRUISE | WHALE WATCHING | SUNSET CRUISE

CALL US ON 1300 763 739 OR BOOK ONLINE
WWW.WILDLIFECOASTCRUISES.COM.AU

Get an up-close look at Australia's amazing wildlife on your journey to Phillip Island.

MELBOURNE'S
AWARD-WINNING
WILDLIFE
EXPERIENCE

NATURE UP CLOSE



Moonlit Sanctuary
the best way to see Aussie animals

Located in Pearcedale — between
Phillip Island and Melbourne City

moonlitsanctuary.com.au | Open daily



Explore Nature Parks with a **4 PARKS PASS**



PENGUIN PARADE
Little Wonders



**NOBBIES OCEAN
DISCOVERY**
Antarctic Journey



CHURCHILL ISLAND
Time Unwinds



**KOALA CONSERVATION
RESERVE**
Bushland Escape

Watch the world's smallest penguins return home at the **PENGUIN PARADE**.
Explore the immersive and interactive **ANTARCTIC JOURNEY** at the Nobbies.
Say hello to the koalas at the **KOALA CONSERVATION RESERVE**.
Step back in time at **CHURCHILL ISLAND**.

Phillip Island
**NATURE
PARKS**

BOOK NOW AT
penguins.org.au
03 5951 2800



f t i #PhillipIslandNP

PHILLIP ISLAND HELICOPTERS



pih.com.au or call 03 5956 7316



UNIQUE

KOALA FEEDING EXPERIENCE

- Join the keepers to help provide the koalas morning feed
- 20-30 minute fully immersive hands on experience
- Exclusive early entry to Maru at 9:00 am
- Guaranteed to see the koalas awake and active
- Includes morning tea back in the Homestead Bistro

Limited places so booking online via our website is essential:

bit.ly/MaruKFE



CARING FOR WILDLIFE
FOR OVER 35 YEARS

MARU

KOALA & ANIMAL PARK



SETTLERS HUT
our nocturnal house with
gliders and possums



VISIT
"FANG ISLAND"
see the reptiles



- Hand feed kangaroos including rare albinos
- See and have the opportunity to touch koalas
- Wombats, dingoes, Tasmanian Devils
- Talking parrots and many other animals
- Crocodile, snakes, lizards and monitors



ANIMAL INTERACTIONS AT MARU

- Enjoy a unique immersive experience with the animals including koalas, dingoes, snakes, lizards, gliders and a Cassowary
- Go inside the animals habitat with the keeper
- Professional photography available
- See our website for full details

ALSO

- Regular keeper talks & presentations
- Wildlife shows in our covered auditorium
- Pirate Pete's Mini-golf adventure
- Meals and drinks at The Homestead Kitchen
- Outdoor children's playground



Sustainable
Tourism
Accredited
Business



@marukoalapark

1650 BASS HWY GRANTVILLE
03 5678 8548
www.marukoalapark.com.au



OFF

GRID | LINE | ROAD

#GETOFFONFRENCHISLAND

**Get OFF GRID, take yourself OFF LINE
& venture OFF ROAD.**

Discover this unique, unspoilt, remote destination....
French Island.



NATURALISTE
TOURS

f t i

naturalistetours.com.au



Be an island
WONDERER

Set sail and wonder

📍 **WESTERN PORT FERRIES**



find
WONDER

*Where some see nothing
others go find wonder*

📍 **FRENCH ISLAND**

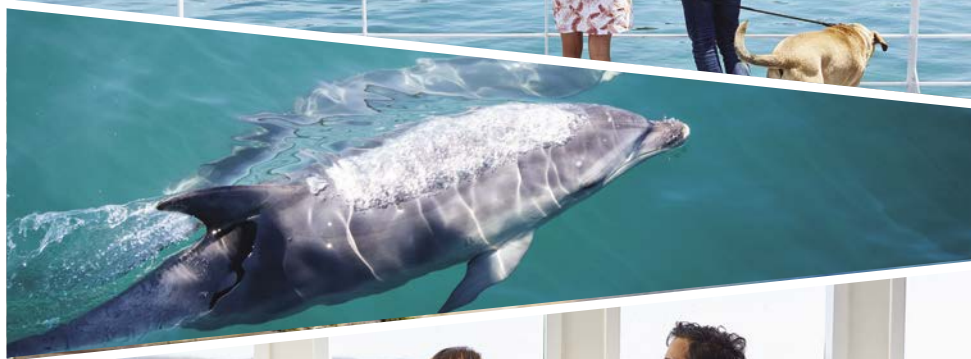


Find wonder on French Island.
westernportferries.com.au

Be an island
WONDERER



SEAROADferries
QUEENSCLIFF – SORRENTO



**A shortcut
you can trust.**

Drive on, drive off ferry across the bay to the Bellarine, Surf Coast & Great Ocean Rd. Visit searoad.com.au for more information.



MY 24/7 GYM

Don't skip your training session when visiting Phillip Island. Get a short term pass at My 24/7 Gym in San Remo and workout whenever you want! Passes start from 3 days with 24-hour unlimited access. Just want a single workout? Casual visits are available during staffed hours. We also offer a 10-visit pass that is perfect for the occasional visitors! My 24/7 Gym is proud to be an independent small business supporting our local community!

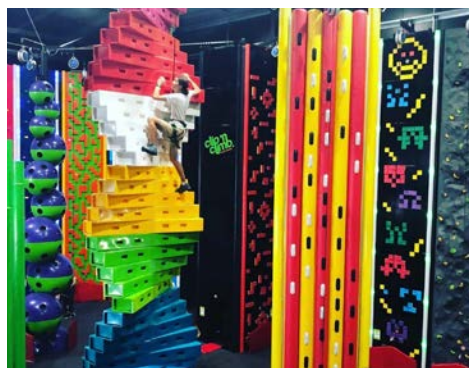
Shop 11, 157-159 Marine Parade
San Remo
T: 03 5678 5533
W: my247gym.com



JIM'S BAIT AND TACKLE

Beginners to experts we can help with all your tackle needs. Rods, Reels, Tackle, Bait, Repairs, Snorkelling, Boating, Camping. New larger shop, bigger range of stock. Drop in, we can set you up, then help you find that perfect spot.

90 Back Beach Road
San Remo
T: 03 5678 5462
W: jimsbaitandtackle.com.au



CLIP 'N CLIMB PHILLIP ISLAND

Get fit and have fun with the whole family at Phillip Island's most exciting new concept in indoor climbing. Reach new heights as you climb 10 metre visually stunning and individually themed wall challenges that will keep everyone engaged.

6-8 Industrial Way
Cowes
T: 03 5952 6780
W: islandclipnclimb.com.au



PHILLIP ISLAND TENPIN BOWLING & ENTERTAINMENT CENTRE



This Modern Family Entertainment Centre is fun for all ages and accessible to all including wheelchair, mobility challenged and vision impaired patrons.

The centre includes 8 Tenpin bowling lanes with automatic scoring and bumpers, Lazer Zone arena with the latest technology, Pool Tables, Arcade Games, Table Tennis, Indoor Children's Playground, Cafe and a Licensed Bar.



CONTACT US



5952 3977



91-97 Settlement Rd Cowes



www.pitenpin.com.au



PHILLIP ISLAND GO KARTS

**FEEL THE SPEED WITH
BREATHTAKING VIEWS!**

Test your skills on the 750m Phillip Island Go Kart track, a replica of the world-renowned Phillip Island Grand Prix Circuit. Book yourself a Go Kart session today.

381 Back Beach Road
Phillip Island

M: 03 5952 9400

W: phillipislandgokarts.com.au



WILSONS PROMONTORY CRUISES

Explore Wilsons Prom Marine National Park

- 2.5 hour wilderness cruise from Tidal River
- Custom built amphibious yellow boats
- Stunning coastal landscape including South Point and Skull Rock
- See thousands of seals, dolphins and migrating whales
- Winner — Australia's Best New Tourism Business 2021

Wilsons Promontory National Park

Tidal River

M: 0428 400 155

W: promcruises.com.au



**SCAN FOR
THINGS TO DO**



SAN REMO FISHERMAN'S CO-OP

- Scrumptious fish & chips featuring seafood off the boats
- Fresh local fish, scallops, oysters & more
- Australian king prawns cooked daily in house
- Local crayfish, both live and cooked
- Free pelican feeding daily at noon

170 Marine Parade
San Remo
T: 03 5678 5206
W: srfco.com.au



THE WESTERNPORT HOTEL

- Live music every weekend #westernportsanremo — Follow us for gig updates
- Boutique accommodation
- Family-friendly bistro
- Dog friendly beer garden
- Open until late
- Where else?

161 Marine Parade
San Remo
T: 03 5678 5205
W: thewesternport.com.au



NORTH PIER HOTEL

Located in idyllic Cowes with stunning water views, North Pier Hotel is the ideal spot to base yourself for your next visit to Phillip Island. With rooms to suit all budgets from dorm rooms, guest suites, and stand-alone town houses, you will find the perfect option for your stay. A short stroll will find you on the doorstep to the many local cafes, restaurants and boutique shops to explore and indulge in.

- Close to beach • Bistro & bar open 7 days with great kids area • Outdoor pool



5 The Esplanade
Cowes
T: 03 5952 2316
W: northpierhotel.com.au





RUSTY WATER BREWERY RESTAURANT & BAR

Rusty Water Brewery Restaurant & Bar is home to Phillip Island Brewing Co.

Boutique speciality and seasonal ales on tap; Contemporary European/Australian cuisine; Internationally trained award-winning Chefs; Bar, Restaurant and relaxed Alfresco dining; Gluten free, Vegetarian & Vegan dining options and a great place to meet and relax with family and friends.



1821 Phillip Island Road
Phillip Island

T: 03 5952 1666

W: rustywaterbrewery.com.au



PHILLIP ISLAND RSL - Your Local Club

- Modern relaxing surrounds with a great range of food and beverage.
- Our **Lone Pine Bistro** - family friendly, seats 220 with healthy choice options, and children's playroom.
- **The Terrace**, alfresco balcony overlooking a native plant garden.
- Sports bar and lounge with big TV screens, pool table, TAB Keno and separate racing area.
- Functions for all occasions, catering for all requirements.



225-243 Thompson Ave
Coves

T: 03 5952 1004

W: pirsl.com.au





WELCOME TO BEACH HQ

Beach HQ Restaurant & Bar is located in the heart of Cowes, close to Phillip Island's major retail hub and tourism attractions. If dining in a casual relaxed ambience, with both indoor and outdoor options available, is to your liking, then go no further. Beach HQ offers the best water views in Cowes and their team will ensure you an experience like no other.



5/17 The Esplanade
Cowes
T: 03 5952 1717
W: beachhq.com.au



PHILLIP ISLAND WINERY

- Cellar door and wine tasting
- Providore and giftware
- 160 seat restaurant
- Huge outdoor area with lawn games
- Regular music on the weekends
- Open Wednesday - Sunday 11.30am-5.30pm

414 Berrys Beach Road
Ventnor

T: 03 8595 2155

W: phillipislandwinery.com.au



PHILLIP ISLAND WINERY



PINO'S TRATTORIA

Nestled off the main street in Cowes, you will find one of the Island's best-known Italian restaurants. This institution has been serving locals and tourists alike for the past 30 years. Known for pizza and pasta. Open daily, lunch & dinner.

29 Thompson Avenue
Cowes

T: 03 5952 2808

W: pinostrattoria.com.au



PINO'S TRATTORIA
1988



OUTBACK CHEF'S WILD FOOD FARM

Wild Food Farm is a unique family-friendly, nature-based experience. Walk our bushfood sensory trail, connect with friends over home-style meals. Cafe food, teas, mixed spices and preserves we create are uniquely Australian reflecting our multi-cultural heritage with native-food fusion.

30 Rhyll-Newhaven Road
Rhyll
T: 0406 153 143
W: wildfoodfarm.com.au



HARMAN WINES

Harman Wines is a multi award-winning family-owned vineyard and winery located near Inverloch.

A great place to "Meet, Eat & Drink" with family and friends and enjoy delicious wines, wood fired pizzas, tapas, local produce and live music in tranquil surrounds.



612 Korumburra-Inverloch Rd
Wattle Bank
T: 03 5611 3857
W: harmanwines.com.au



**SCAN FOR
EAT & DRINK**



Park Lane

PHILLIP ISLAND

HOLIDAY PARK

motel, cabins & camping



1825 Phillip Island Rd, Cowes

Phone: 5952 2283

parklaneholidayparks.com.au



ANCHOR BELLE HOLIDAY PARK

The ideal holiday destination situated in the heart of Cowes. Set back 100m from the beach, where you can safely swim, fish, paddleboard or stroll into Cowes esplanade, only 2km from the shopping precinct. Within 10min drive from local attractions. Indoor heated pool, jumping cushion, basketball court & games rooms.

A diverse range of accommodation & camping options.

"Unpack, unwind & relax"



272 Church Street
Cowes

T: 03 5952 2258

W: anchorbelle.com.au



BEACH PARK TOURIST CARAVAN PARK

- Beach frontage, shade trees, park-like setting
- Heated salt water pool, BBQ barn/camp kitchen
- Beachfront bungalows and cabins
- Bed linen, doonas and towels provided
- Camping/Caravan sites

2 McKenzie Road
Cowes

T: 03 5952 2113

W: beachparkphillipisland.com



Not peak





PHILLIP ISLAND APARTMENT GROUP

03 5952 2644

book@stayonphillipisland.com.au
www.stayonphillipisland.com.au
www.phillipislandtowers.com.au

PIA
 PHILLIP ISLAND
 APARTMENTS

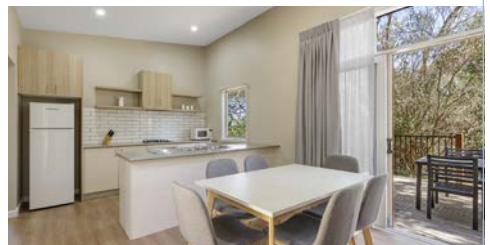
OCEANIC
 ON THOMPSON
 APARTMENTS

PHILLIP
 ISLAND
 TOWERS



RAMADA RESORT by WYNDHAM PHILLIP ISLAND

- Family friendly resort with studio, 2 bedroom and 3 bedroom villa options available
- Resort Facilities including: swimming pools, indoor lap pool, gymnasiums, spa, sauna, bbq facilities, tennis courts and games room
- Onsite Restaurant and Bar with all day dining available
- Conference and Event facilities



2128 Phillip Island Road
 Cowes

T: 03 5952 8000

W: ramadaphillipisland.com.au

E: reservations.phillipisland@wyn.com



RAMADA
 RESORT BY WYNDHAM
 PHILLIP ISLAND
Flametrees
 RESTAURANT & BAR



BIG4 INGENIA HOLIDAYS PHILLIP ISLAND

If you like absolute beachfront, you'll love this park. It's a great choice for beach and nature lovers. Wake up each morning with a leisurely stroll along Newhaven Beach or cast a fishing line in and sit back and relax.

24 Old Bridge Drive

Phillip Island

T: 03 5956 7227

W: ingeniaholidays.com.au/phillip-island



AMAROO PARK

Amaroo Park is a 50 metre walk to Coles, 2 minutes walk to town and a 5 minute walk to the beach. We have Villas and Studios as well as a small number of camp sites. On site is an outdoor pool, BBQ area, games room and a restaurant.

97 Church Street

Cowes

T: 03 5952 2548

W: amaroopark.com.au



GENESTA HOUSE

- Original heritage home & gardens
- 100m to Cowes Beach
- 5 minute walk to town and shops
- 3 beautifully appointed guest suites with ensuite
- Continental breakfast provisions
- Old fashioned hospitality and service

Simonne & Marcus Liberman

18 Steele St

Cowes

M: 0412 032 173



SILVERWATER RESORT

- 4.5 star resort overlooking Western Port Bay
- 1 - 3 bedrooms, room service, free car parking
- All apartments have balconies with BBQ facilities
- Indoor & outdoor pools, tennis courts
- Extensive menus featuring region's best produce

17 Potters Hill Road

San Remo

T: 03 5671 9300

W: silverwaterresort.com.au





QUAYS MOTEL

- Overlooking Western Port Bay
- On-site parking for cars, boats and trailers
- BBQ facilities
- Spa rooms, family rooms, twin rooms
- Easy access room

37-39 Phillip Island Road
San Remo
T: 03 5678 5555
W: quaysanremo.com.au



PELICANS MOTEL SAN REMO

- Affordable and comfortable accommodation
- Walking distance to shops and beaches
- Rooms with 1 to 5 beds
- Free on-site parking
- Call us for discount rates

43 Back Beach Rd
San Remo
T: 03 5678 5380
W: pelicansmotel.com



RACV INVERLOCH RESORT

Set between wetlands and pristine beaches of the Bass Coast, RACV Inverloch Resort is the perfect place to recharge in comfort while reconnecting with nature.

Enjoy accommodation from premium ocean view rooms and stylish villas, to spacious cabins and caravan sites.

70 Cape Paterson-Inverloch Rd
Inverloch
T: 03 5674 0000
W: racv.com.au/inverloch



KILCUNDA OCEANVIEW HOLIDAY RETREAT

- Stunning ocean views, direct access to beach
- Oceanfront spa cottage, villas, cabins
- Powered sites and camping
- Games room, playground, tennis court
- Adjacent to Rail Trail for bikes and walks

3560 Bass Highway
Kilcunda
T: 03 5678 7260
W: kilcundaoceanview.com.au





Beach-side getaways with Inverloch Accommodation
 Inverloch Accommodation professionally manages short term holiday accommodation in Inverloch, Cape Paterson, Venus Bay and Wonthaggi. When you book directly via our website www.inverlochaccommodation.com.au or by telephone, we guarantee the best price and service to our guests. With over 200 properties, Inverloch Accommodation will find the perfect short stay to suit your needs and budget.



**INVERLOCH
 ACCOMMODATION**

Phone: 5613 9053

www.inverlochaccommodation.com.au
hello@inverlochaccommodation.com.au



**SCAN FOR
 ACCOMMODATION**

Enjoy it, don't spoil it!



Our community is passionate about protecting Bass Coast's unique natural environment for everyone to enjoy. Bass Coast Shire Council are also doing our bit to address climate change by declaring a climate emergency and setting a target of net zero emissions Shire-wide by 2030.

Council's buildings, facilities and streetlights are now powered by 100% renewable electricity, reducing energy costs and emissions.

Find out how you can be part of the solution, and reduce your energy bills, at www.thecap.com.au.



Reducing the amount of waste we send to landfill is a key action in our Climate Change Action Plan. Bass Coast is proud to be the best in Victoria at diverting kerbside waste from landfill.

When you're visiting Bass Coast please help protect our precious environment by using the right bin.

Find out more at:

www.basscoast.vic.gov.au/waste



Plan your trip



Phillip Island Visitor Information Centres

call 1300 366 422



visitphillipisland.com.au



visitbasscoast.com.au

Stay in touch



@phillipisland @basscoast



@phillipisland



@visitphillipisland



visitphillipisland.com.au



Phillip Island Tourism