



# DAINTREE RIVER

## River Basin Summary

<b>Population (2006):</b> <sup>1</sup>	2,873
<b>Major Towns:</b> <sup>1</sup>	None
<b>Major Rivers:</b> <sup>2</sup>	Daintree River, East Normanby River (North Branch), Boolbun Creek

### Surface Water Storages:<sup>2, 3, 4</sup>

Largest known storages:	None
No. of storages:	0
Storage capacity (ML):	0

### Licensed Irrigation:

Largest areas: <sup>3</sup>	None
Number of licenses: <sup>5</sup>	N/A
Average annual allocation (ML):	
Since 1996-97:	N/A
Minimum:	N/A
Maximum:	N/A

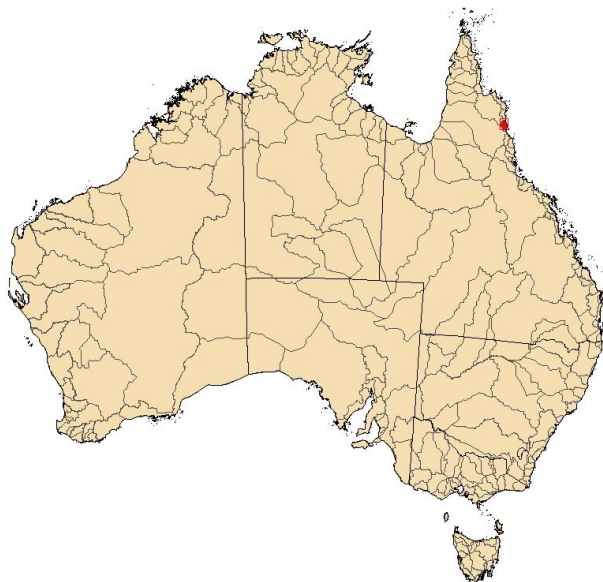
Average annual diversion (ML):	
Since 1996-97:	N/A
Minimum:	N/A
Maximum:	N/A

### Groundwater:

Number of production bores: <sup>7</sup>	142
Recharge rate (mm/year): <sup>8</sup>	Data being compiled
Yield (ML/year): <sup>8</sup>	Data being compiled
Extraction (ML/year): <sup>7</sup>	Data being compiled

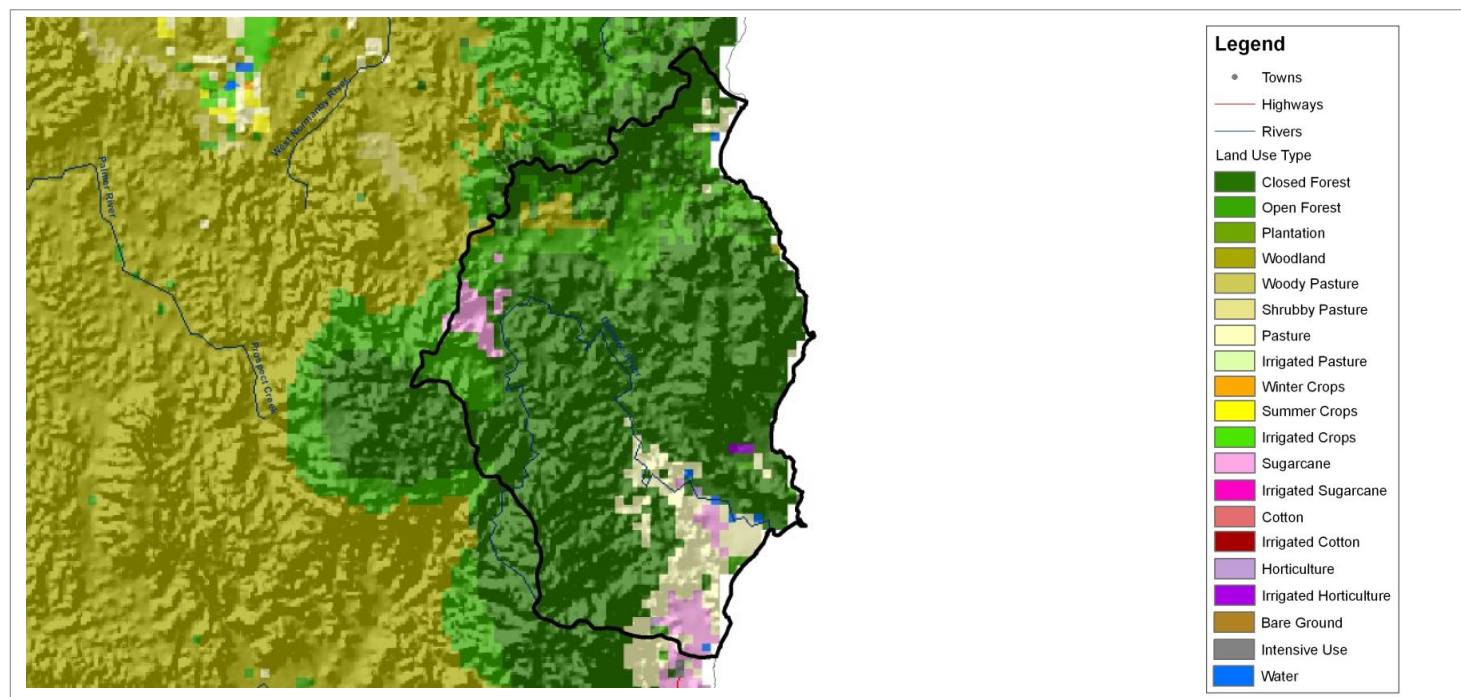
### Rainfall Reliability:

Chance of receiving average seasonal rainfall: <sup>8</sup>	Medium	(4.5 to 5 yrs in 10)
---	--------	----------------------



N/A = Not available

<sup>1</sup> Australian Bureau of Statistics (2006); <sup>2</sup> Geosciences Australia (1999); <sup>3</sup> National Land and Water Resources Audit (2000); <sup>4</sup> Australian National Committee on Large Dams (2004); <sup>5</sup> Australian National Committee - International Commission on Irrigation and Drainage (2005); <sup>6</sup> Murray Darling Basin Commission (2005); <sup>7</sup> State Agencies (2006); <sup>8</sup> Bureau of Rural Sciences (2007); <sup>x</sup> Incomplete



## DAINTREE RIVER

### Modelled Annual Water Balance

Land Use Type	Area (sqkm)	Precipitation (ML)	Runoff (ML)	ET (ML)	Deep drainage (ML)	Irrigation (ML)	Return flow (ML)
Closed Forest	1,359	4,368,697	2,070,393	2,235,054	63,250	0	0
Open Forest	259	715,663	298,340	406,943	10,380	0	0
Plantation	0	0	0	0	0	0	0
Woodland	27	79,393	38,743	39,507	1,143	0	0
Woody Pasture	0	0	0	0	0	0	0
Shrubby Pasture	0	0	0	0	0	0	0
Pasture	152	452,356	250,106	195,554	6,696	0	0
Irrigated Pasture	0	0	0	0	0	0	0
Winter Crops	0	0	0	0	0	0	0
Summer / Fodder Crops	0	0	0	0	0	0	0
Irrigated Crops	0	0	0	0	0	0	0
Sugarcane	70	186,331	76,788	100,840	8,703	0	0
Irrigated Sugarcane	0	0	0	0	0	0	0
Cotton	0	0	0	0	0	0	0
Irrigated Cotton	0	0	0	0	0	0	0
Horticulture	2	5,903	2,726	3,093	84	0	0
Irrigated Horticulture	3	10,429	5,386	4,897	146	513	7
Bare Ground	0	0	0	0	0	0	0
Intensive Use	0	0	0	0	0	0	0
Water	6	17,455	10,517	6,680	257	0	0
<b>Entire Basin</b>	<b>1,912</b>	<b>5,940,760</b>	<b>2,752,998</b>	<b>3,097,103</b>	<b>90,659</b>	<b>513</b>	<b>7</b>
<b>NLWRA<sup>1</sup></b>	<b>2,192</b>	<b>N/A</b>	<b>2,512,000</b>	<b>N/A</b>	<b>N/A</b>	<b>4,419</b>	<b>N/A</b>
<b>AWRC<sup>2</sup></b>	<b>2,130</b>	<b>N/A</b>	<b>3,560,000</b>	<b>N/A</b>	<b>N/A</b>	<b>N/A</b>	<b>N/A</b>

Data Sources: All climate data sourced from the Australian Bureau of Meteorology.

<sup>1</sup>National Land and Water Resources Audit (2000); <sup>2</sup>Australian Water Resource Council (1987)

# DAINTREE RIVER

## Average Annual Water Resource Summary (GL)

### Water Supply

Runoff: <sup>1</sup>	2,753
Transfers: <sup>1, 2</sup>	0
Groundwater Sustainable Yield: <sup>3</sup>	21
<b>Total:</b>	<b>2,774</b>

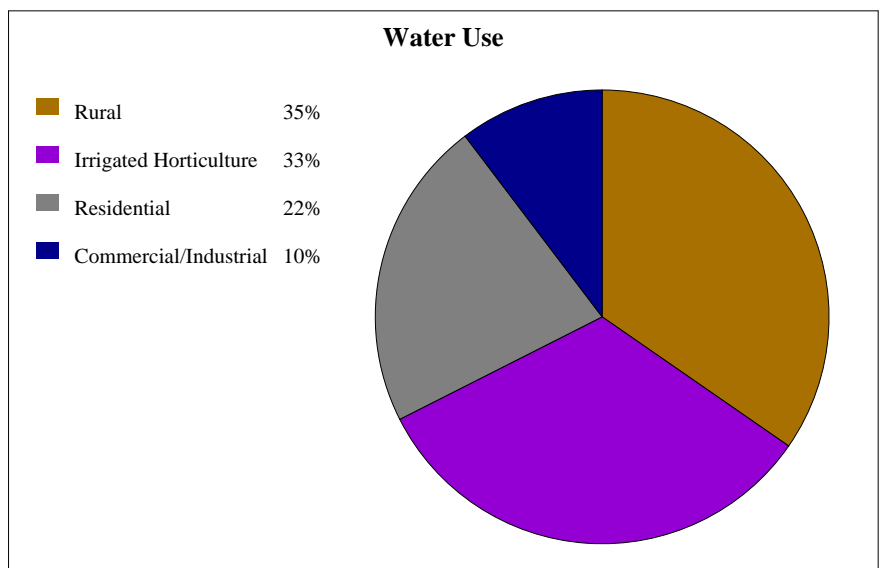
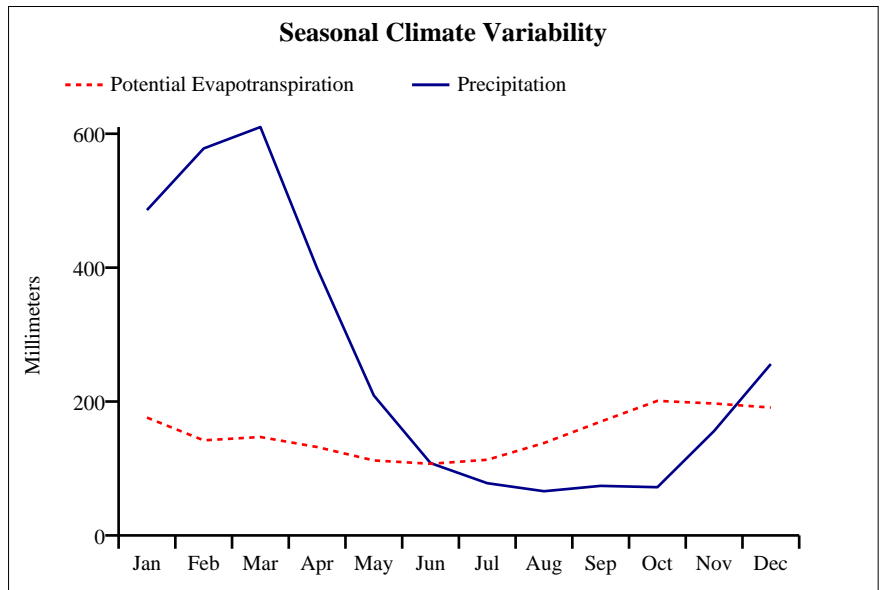
### Water Use

Irrigation: <sup>1</sup>	<1
Residential: <sup>1</sup>	<1
Commercial/Industrial: <sup>3</sup>	<1
Rural (Stock/Domestic): <sup>3</sup>	<1
Transfers: <sup>1, 2</sup>	0
<b>Total:</b>	<b>2</b>

**Total Use (% of Supply):** <1%

### River Flows

Retained in Storage: <sup>~</sup>	0
Environmental Flows:	Data being compiled
Transmission Losses: <sup>^</sup>	688
Return Flows: <sup>1</sup>	<1
<b>Outflow:<sup>@</sup></b>	<b>2,064</b>



N/A = Not available

<sup>1</sup>Bureau of Rural Sciences (2007); <sup>2</sup>Australian Water Resource Council (1987); <sup>3</sup>National Land and Water Resources Audit (2000)

<sup>#</sup>Groundwater only; <sup>\*</sup> Surface water only; <sup>~</sup> 5% of total storage; <sup>^</sup> 25% of runoff; <sup>x</sup> incomplete

<sup>@</sup> Surface water (supply - use - retention in storage - transmission losses + environmental flows + return flows)